

BMW 1 Series



www.bmw.com

Sheer
Driving Pleasure



THE BMW 1 SERIES.

JOY TIMES TWO.

BMW EfficientDynamics
Less emissions. More driving pleasure.



International version. Please contact your local dealer for country specific information.

BMW 1 Series 3-door

- 04 | 11 Exterior
- 12 | 15 Interior

BMW 1 Series 5-door

- 16 | 21 Exterior
- 22 | 25 Interior


Technology


- 26 | 27 BMW EfficientDynamics
- 28 | 31 Engines
- 32 | 33 Active Steering I Safety
- 34 | 35 BMW ConnectedDrive
- 36 | 37 Safety

Equipment

- 38 | 41 Colours
- 42 | 43 Combination examples
- 44 | 45 Lifestyle Edition I Sports Edition
- 46 | 57 Standard I Optional equipment
- 58 Original BMW Accessories
- 59 | 63 Standard I Optional equipment
- 64 | 65 Technical data
- 66 | 67 BMW Service I BMW Financial Services

DOUBLE THE JOY.

	Specifications of model shown:
	Engine: Four-cylinder petrol engine Output: 125 kW (170 hp) Wheels: 18" light-alloy V-spoke 217, mixed tyres Exterior colour: Alpine White, non-metallic Upholstery: Pearlpoint with cloth/leather in orange Interior trim: Brushed Aluminium with accent line
BMW 120i 3-door	
For information on fuel consumption and CO ₂ emissions, please refer to pages 64 65.	

	Specifications of model shown:
	Engine: Four-cylinder petrol engine Output: 125 kW (170 hp) Wheels: 17" light-alloy V-spoke 141 Exterior colour: Black Sapphire, metallic Upholstery: Boston leather Beige Interior trim: Black, high-gloss
BMW 120i 5-door	
For information on fuel consumption and CO ₂ emissions, please refer to pages 64 65.	





Driving pleasure knows no end. But it has a beginning. The BMW 1 Series. As a compact 3-door with sporting qualities that can't be overlooked. And with exceptional performance. The reasons why it's so hard to stop thinking about are best identified while behind the wheel. Or on the following pages. Follow where it leads. Just a few metres into your trip and you will already sense the incomparable dynamism of the BMW 1 Series 3-door – the only vehicle in its class with the quintessential BMW rear-wheel drive. It promises unparalleled driving pleasure, as it was conceived to comply with the BMW EfficientDynamics philosophy of reducing fuel consumption and improving dynamics. You'll feel spoilt for choice when it comes to the engine. To power your BMW 1 Series 3-door you can choose from three efficient four-cylinder petrol engines with High Precision Injection, or a torquey six-cylinder petrol engine, or one of four economical diesel engines with a particle filter as standard. In just a split second the vehicle brings the whole force of the engine to bear on the road. Driving your ... ►

**ITS ENGINE SAVES ON EVERYTHING EXCEPT POWER.
BMW EFFICIENT DYNAMICS.**

► ... pulse through the roof. A high level of driving comfort coupled with dynamic handling ensure that the BMW 1 Series 3-door delivers sublime driving pleasure. The foundation for this is created by an optimal 50:50 axle load distribution. Not forgetting the Active Steering, optionally available for the 130i, which perfectly adapts steering transmission and steering power support to suit the driving speed. Meaning greater agility on bends and improved directional stability at high speeds. Active Steering also helps to take the stress out of parking. It increases the steering angle, so you don't have to cross hands on the wheel. This BMW innovation is therefore not just a boost to your safety but also to your comfort and, needless to say, to your driving pleasure, ... ►

**WHILE TWO AXLES TAKE
THE LOAD, ONE DRIVER
GETS THE BENEFIT**



THESE PERFECT CONTOURS WILL DRIVE YOU TO DISTRACTION.

► ... which becomes tantalisingly obvious when you take a closer look at the BMW 1 Series 3-door. Its contours are defined by dynamic proportions, a long wheel base and short overhangs. Its elongated windows suggest an enticing blend of elegance and outstanding athleticism. The long, frameless door gives the impression that the car's centre of gravity has shifted towards the rear, meaning that the front appears exceptionally long while the contours of the BMW 1 Series suggest unadulterated dynamism. The 3-door seems to stand poised for action, constantly signalling its readiness to drive. An invitation that's ... ►



► ... simply too enticing to ignore. A whole array of innovations mean the BMW 1 Series 3-door is at the vanguard of technology. But also ahead in safety matters. As demonstrated by the optional Adaptive Headlights, including turning lights, which automatically adapt their beam direction to suit the road's contours. So you can always see what's round the corner, even in the dark. The optional High-beam assistant automatically switches between high and low beam for safer night driving. Travelling on runflat tyres (standard on light-alloy wheels 17" and larger*) gives added peace of mind. If you do get a puncture, your car will still take you to the next BMW partner. And there's no need to leave the road – a road on which ... ►

* May vary by country.

**WANT TO KNOW WHAT THE FUTURE FEELS LIKE?
FIND YOURSELF A WINDING ROAD.**





YOUR MP3 COLLECTION ALWAYS AT YOUR FINGERTIPS.

► ... it's particularly easy to concentrate in the BMW 1 Series 3-door. You can play your favourite tracks from an MP3 player or USB stick while you drive with the optional USB/audio interface. Depending on the equipment, tracks will be displayed on your BMW radio Professional or in the navigation system's Control Display. Tracks can be selected in seconds via the radio buttons or the iDrive Controller, which is now even easier to operate. Four direct menu control buttons take you to the CD, radio, navigation and telephone options. In fact, in the BMW 1 Series 3-door the pleasure of driving kicks in ... ►



► ... before you've moved an inch. The frameless doors highlight how the vehicle as a whole embodies pure dynamism and sportiness, even when stationary. A sensation that in no way diminishes when you step in. Ergonomic seats offer perfect support for the driver and passengers in both the standard four-seater or the optional five-seater version. Whatever you need while driving can be kept in the storage pockets and compartments. But the largest space of all in the BMW 1 Series 3-door is reserved for something which does not require any space – your driving pleasure.

**THE RIGHT FRAMEWORK FOR A DYNAMIC
PERFORMANCE: A NON-EXISTENT FRAMEWORK.**

WE TOOK THE DESIGN CRITERIA STRAIGHT FROM LIFE.

Prepare to experience a vehicle whose agility is perfectly complemented by its elegance. Whether on long straight stretches of road or tight bends, the BMW 1 Series 5-door always creates a stir. And an atmosphere of pure pleasure. Even when stationary the elongated bonnet and the passenger cell located towards the rear indicate exceptional sportiness. Thanks to its distinctive tail, even at 0 km/h it still exudes dynamism. Its versatility becomes apparent at second glance, with five seats as standard and a foldable and asymmetrically separable rear seat backrest. Nevertheless, you are sure to ... ►





THIS ENGINE IS ESPECIALLY POWERFUL WHEN IT'S SWITCHED OFF – BMW EFFICIENT DYNAMICS.

► ... find that the road is the best place to appreciate its qualities. With Dynamic Stability Control (DSC) which ensures optimal directional stability and perfect traction. Two crucial ingredients for maximum driving pleasure, in any driving scenario. A tendency to oversteer or understeer is detected in a fraction of a second by DSC's highly sensitive sensors, which intervene if necessary in the engine and brake management. If understeering is only slight, the optional Active Steering system (optionally available for the BMW 130i) rectifies the situation almost imperceptibly. How state-of-the-art expertise creates sheer driving pleasure is also shown by the Intelligent Energy Management feature in the BMW 1 Series engines. The Auto Start/Stop function (for all four-cylinder models in conjunction with 6-speed manual transmission) automatically turns the engine off when no power is needed, for example at traffic lights. The engine starts afresh when light pressure is applied to the clutch. When the engine is in coasting mode, Brake Energy Regeneration means that no excess energy goes to waste. The combination of these two innovations delivers improved performance and reduced fuel consumption. A classic example of BMW's EfficientDynamics philosophy. From powerful petrol engines to efficient diesels – when combined with the perfectly tuned 6-speed transmission, power is optimally conveyed onto the road.





**THE HALLMARK OF A GOOD
OPERATING SYSTEM IS THAT
YOU DON'T NOTICE IT.**

Even though it directs all attention onto the road, the optional operating system with the next generation iDrive means you always take centre stage. The Controller in the centre console allows you to intuitively operate the various functions. Any information you need can be viewed quickly and accurately on the glare-free Control Display on the dashboard. Eight functional bookmarks can be programmed to facilitate direct access to your own personalised functions – from your favourite radio station to your most useful telephone numbers – all in the blink of an eye. With all this user-friendliness, the only thing left is for you to ... ►

Equipment of model shown:

Upholstery:	Boston leather Beige
Interior trim:	Black, high-gloss
Optional equipment:	Sports leather steering wheel with multifunction buttons, Navigation system Professional*, automatic air conditioning

* Not available in all countries. Please consult your BMW partner.



YOU ALMOST DON'T MIND NOT BEING BEHIND THE WHEEL.

► ... step right in. Comfortable accommodation is on offer in the rear, where you can enjoy the luxury and driving pleasure of the BMW 1 Series, even though you're not behind the wheel. The ergonomically designed seats are just as impressive as the boundless versatility of the interior. As demonstrated by the 60:40 dividable rear seat backrest which can be folded away to give an almost level storage area. And

when it comes to interior equipment, you can choose between a huge array of high-quality options, all of which boast excellent craftsmanship and pleasant haptic qualities. Whether you opt for the 3-door or the 5-door model, when it comes to sheer driving pleasure there's one thing that's alien to the BMW 1 Series, and that's compromise.

THIS HAS GONE IN.

The pleasure you get from driving a BMW is the result of fine engineering that has always set the standard by exceeding mere engine performance. This is the tradition behind BMW EfficientDynamics. It includes the visionary Hydrogen engine, already used in completely emission-free BMW Hydrogen 7 vehicles, and BMW ActiveHybrid technology – an intelligent, demand-oriented combination of internal combustion engine and electric motor. And every BMW already includes the multi-award-winning BMW EfficientDynamics technology package as standard that boosts dynamics even further whilst simultaneously reducing fuel consumption and CO₂ emissions.

High Precision Injection.

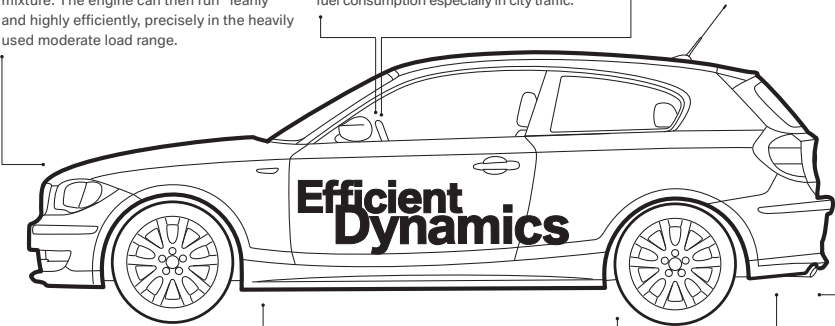
In this cutting-edge generation of petrol direct injection, the Piezo injectors are positioned very close to the spark plugs. They inject the fuel at high pressure and with extreme precision. The injectors' central positioning means only part of the combustion chamber needs to be filled with an ignitable petrol-air mixture. The engine can then run "leanly" and highly efficiently, precisely in the heavily used moderate load range.

Auto Start/Stop function.

BMW four-cylinder engines with six-speed manual transmission automatically shut down when the vehicle is stationary, for example at a red light or in a jam, when the driver activates the clutch and switches to neutral. The engine restarts as soon as the clutch is activated again. This innovation significantly reduces fuel consumption especially in city traffic.

Optimum Shift Indicator.

Timely gear shifts are one of the most effective and easiest ways to save fuel. This is where the Optimum Shift Indicator in conjunction with six-speed manual transmission comes in. It shows the driver what gear to use in order to save fuel.



Electric Power Steering.

Unlike conventional, hydraulic steering systems, the electrical steering only uses energy during actual steering. When the steering wheel position is constant – for example at high speed along the motorway – the electric motor is inactive.¹

Tyres with reduced rolling-resistance.

While driving, tyres are constantly changing shape. This uses up energy and thus fuel. Tyres with reduced rolling-resistance have an improved design and use special materials for their road treads and side walls, which reduces deformation.

Brake Energy Regeneration.

To supply the battery with electrical energy, the generator (alternator) is permanently driven using engine power, which demands additional fuel consumption. Brake Energy Regeneration means the generator usually only generates electricity when the driver takes their foot off the accelerator or brakes – previously unused kinetic energy is transformed in coasting mode into electrical energy before being fed into the battery. In this way, electricity is generated while coasting, without consuming fuel.

Some BMW EfficientDynamics features are dependent on the car's equipment and are not available for all model variants. Your BMW partner will be happy to provide you with information on all equipment details.

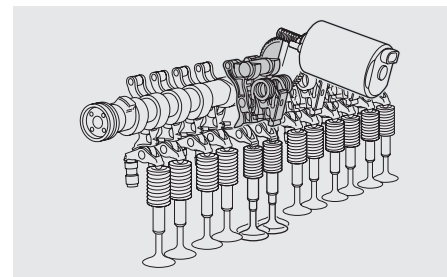
THIS IS WHAT COMES OUT.

BMW already offers 30 models with CO₂ emissions of 140 g/km and significantly less. But that's just for starters. We're carrying on our research with EfficientDynamics – in the quest to bring you more driving pleasure and less emissions.

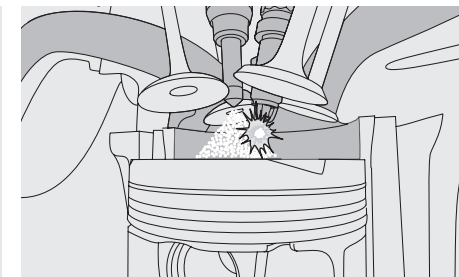
¹ Available for diesel engines with automatic transmission in conjunction with Servotronic.



The 3.0 litre six-cylinder in-line engine in the BMW 130i is unsurpassably refined all the way up to its top speed.



Valvetronic: for more power and reduced fuel consumption. Continuously variable inlet valve lift ensures improved air supply to the six-cylinder in-line engine (130i), especially in the partial load range. This system replaces the function of the throttle valve by varying valve lift in line as and when needed.



High Precision Injection: with this innovative High Precision Injection direct injection method, the efficiency of the four-cylinder engines rockets sky-high. Piezo injectors situated right near the spark plug allow the engine to be powered leanly in the partial load range. The combustion chamber is only partly filled with an ignitable petrol-air mixture, helping to reach extremely efficient fuel consumption levels.

BMW EFFICIENT DYNAMICS CONTAINS THE COLLECTED ENERGY OF ALL OUR ENGINEERS.

BMW engines have a multitude of strengths. They are high-revving and smooth-running, powerful and efficient. One reason for this is the BMW EfficientDynamics philosophy, encompassing a whole range of innovations such as Intelligent Energy Management. Depending on the engine version, it can include High Precision Injection, Brake Energy Regeneration and the Auto Start/Stop function¹. These innovations serve just one purpose: Each BMW should provide as much driving pleasure as possible – and offer the highest possible cost-effectiveness. In addition, all our petrol engines fulfil the EU5 emissions standard.

BMW 130i. Even this six-cylinder in-line engine sets new manufacturing standards. An exceptional power-to-weight ratio is achieved through the extensive use of magnesium and aluminium. The engine offers spontaneous power delivery and high revving power, which only lets up at 7,000 rpm. Meanwhile Valvetronic and Brake Energy Regeneration ensure excellent performance from less fuel. From a three-litre capacity come a powerful 190 kW (258 hp)², accelerating the vehicle in only 6.1 seconds (6.0 seconds for the 3-door model) from 0 to 100 km/h. It reaches a maximum torque of 310 Nm at just 2,600 rpm and the top speed is 250 km/h.

BMW 120i. A litre of fuel less, a second faster³. That's the essence of BMW EfficientDynamics in the case of the BMW 120i. A whole package of intelligent measures – from High Precision Injection through to the Auto Start/Stop function¹ and Brake Energy Regeneration – helps to noticeably reduce fuel consumption and emissions and ensures the highest rate of efficiency to the very last detail. Piezo injectors are at the core of High Precision Injection: they ensure optimal combustion, they use high pressure to inject fuel into the combustion chambers up to 200 times in the blink of an eye. This is where the petrol/air

mixture is "slimmed down" meaning the engines retain their high efficiency in the much-used partial load range. The result: average consumption of just 6.6 litres per 100 km. But this in no way detracts from the engine's impressive dynamism. The 125 kW (170 hp) at 6,700 rpm allows a top speed of 224 km/h. 210 Nm max. torque at 4,250 rpm stands for high engine power, propelling you to 100 km/h in just 7.8 seconds (3-door: 7.7 seconds).

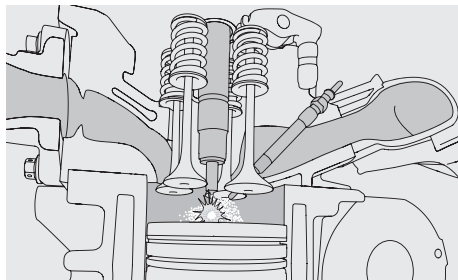
BMW 118i. This four-cylinder in-line engine also features High Precision Injection. The high-revving drive system commands over 105 kW (143 hp)², speeding the BMW 1 Series from 0 to 100 km/h in 8.8 seconds (3-door: 8.7 seconds). And if you should so desire, up to a top speed of 210 km/h. The Auto Start/Stop function¹ and Brake Energy Regeneration guarantee high efficiency.

BMW 116i. Likewise fitted with four cylinders, with this engine version the BMW 1 Series really is a dynamic drive. All thanks to 90 kW (122 hp)², that delivers swift responses and heaps of pulling power with a maximum torque of 185 Nm at just 3,000 rpm and a top speed of 204 km/h. The High Precision Injection, Auto Start/Stop function¹ and Brake Energy Regeneration all boost the engine's efficiency, turning drive power into pure acceleration. And all in the 9.9 seconds (9.8 seconds for the 3-door model) needed to take you from 0 to 100 km/h and with an average consumption of 6.1 l/100 km.

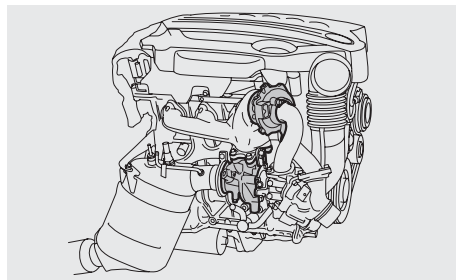
¹ For all four-cylinder models in conjunction with six-speed manual transmission.

² Information on fuel consumption and CO₂ emissions can be found on pages 64 | 65.

³ BMW 120i (until 01/07) vs. BMW 120i 3-door acceleration from 0 to 100 km/h. Consumption measured on the basis of the ECE driving cycle.



With **diesel direct injection**, the fuel is injected into the engine's combustion chamber by electronically controlled injectors. The injection sequence can be varied at will, up to five injection processes in one combustion cycle, with positive effects on the engine's acoustics and emissions.



BMW TwinPower Turbo technology: the four-cylinder in-line diesel engine of the BMW 123d features two intelligently combined turbochargers. The smaller of the two ensures rapid power delivery at low speeds, the larger provides maximum performance right up to top speeds.

BMW EFFICIENT DYNAMICS MEANS OUR ENGINES CUT CONSUMPTION, NOT PERFORMANCE.

The BMW 1 Series diesel engines offer both accomplished power and high efficiency. Each engine (excluding the 116d) features two balance shafts and Common Rail Technology to ensure quiet running. A high-pressure pump with quantity control atomises fuel, enabling advanced performance that is quieter than ever. The BMW EfficientDynamics approach also encompasses intelligent energy management with Brake Energy Regeneration, and an Auto Start/Stop function¹. So BMW diesel engines can provide even more driving pleasure with the highest possible efficiency.

BMW 123d. The BMW TwinPower Turbo four-cylinder diesel engine features two differently sized turbochargers switched in series. The first, smaller charger ensures instantaneous engine response at low speeds; the second, larger turbocharger provides further considerable drive thrust at higher speeds. This leads to a unique ratio of performance to consumption. In numbers: 150 kW (204 hp), 400 Nm, 0 to 100 km/h in 7.0 seconds (6.9 seconds on the 3-door model) – with an average consumption of just 5.1 l/100 km and top speed of 238 km/h.

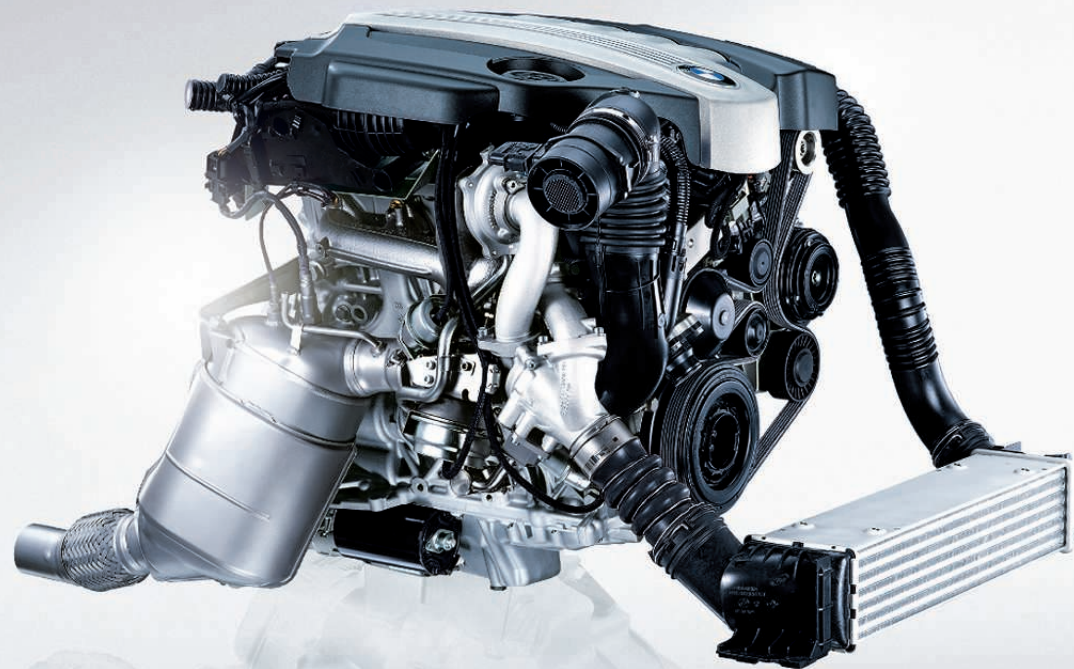
BMW 120d. The 130 kW (177 hp) engine power is released forcefully, efficiently and elastically, firing the BMW 1 Series from 0 to 100 km/h in 7.6 seconds (7.5 seconds on the 3-door model). Its refined operation can be enjoyed all the way up to a top speed of 228 km/h. Maximum torque is 350 Nm at 1,750 rpm. The Auto Start/Stop function¹ turns

the engine off when power is not required, for instance at traffic lights, and starts it afresh when light pressure is applied to the clutch. Brake Energy Regeneration uses engine braking to charge the car battery as soon as you take your foot off the accelerator. This intelligent energy management results in average fuel consumption of only 4.7 litres over 100 km.

BMW 118d. This engine version is proof that low-vibration running can go hand in hand with breathtaking acceleration, namely from 0 to 100 km/h in no more than 9.0 seconds (3-door models: 8.9 seconds). And with its 105 kW (143 hp), it peaks at 210 km/h. Thanks to the Auto Start/Stop function¹ and Brake Energy Regeneration, only 4.5 litres of diesel flows on average through the injection nozzles per 100 km driven.

BMW 116d. This engine with a capacity of two litres develops its full 85 kW (116 hp) heft powerfully and elastically. The vehicle accelerates spontaneously in 10.3 seconds (3-door models: 10.2 seconds) from 0 to 100 km/h and reaches its top speed of 200 km/h with uninterrupted refinement. The maximum 260 Nm torque is applied even at 1,750 rpm, and the engine consumes on average only 4.5 litres over 100 kilometres.

¹ For all four-cylinder models in conjunction with six-speed manual transmission.



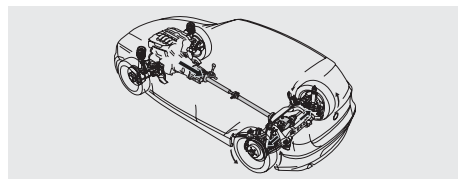
The BMW TwinPower Turbo 2.0 litre four-cylinder engine in the BMW 123d boasts an unequalled fusion of power and efficiency.



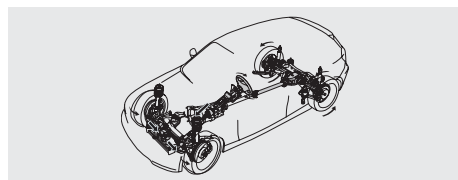
AGILE. MORE AGILE. THE BMW 1 SERIES.

The BMW 1 Series merges comfort and driving safety with BMW's characteristic dynamic performance, and the Active Steering system (optionally available for the BMW 130i) makes the driving experience even more enjoyable. This system generates either a wider or narrower front wheel steering angle, depending on the speed the vehicle is

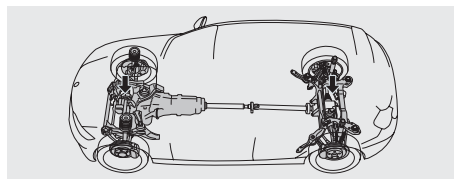
travelling, and optimises the force needed to turn the steering wheel to best suit the driving conditions. So you can enjoy increased agility on winding roads, more safety at higher speeds, and greater parking convenience.



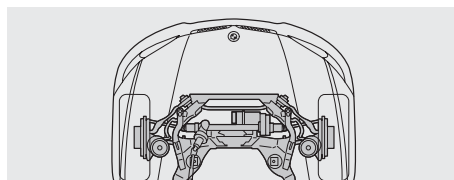
Rear-wheel drive: This hallmark BMW drive configuration ensures an exciting level of agility and enables even weight distribution across the entire running gear; this optimises traction and thus transmission of power to the road.



Steering: Torque steer is completely alien to the BMW 1 Series because steering and propulsion are not handled by the same pair of wheels. Steering force distribution is even, steering does not become harder, and steering angles are small. The benefit: cornering speed and road condition can be sensed through the steering wheel. Electrical power steering also helps to reduce fuel consumption levels.



50/50 weight distribution: The front and rear axles each carry almost exactly half of the car's weight – these balanced masses help to maintain great directional stability. With its first-class suspension and DSC provided as standard, the BMW 1 Series remains stable all the way to the limits.



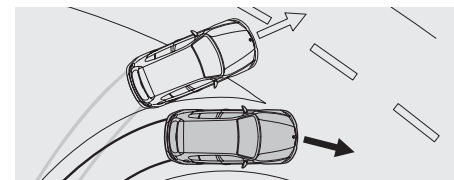
Aluminium front suspension: A lightweight, double-joint spring strut front axle for maximum strength and minimum weight. With hydro-mounts for superior vibration and noise comfort. The overall result: unique dynamics and incomparable steering characteristics.

WE CAN'T ENSURE ROAD SAFETY. BUT WE CAN MAKE OUR CARS SAFER.

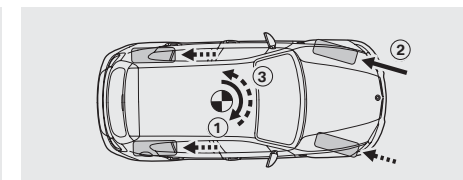
You can rely on the new BMW 1 Series in any situation. Our engineers made sure of this by giving it a very stiff body. With control systems as standard, Brake Force Display and a plethora of other engineering innovations, the BMW 1 Series offers a new level of safety. The special DSC (Dynamic Stability Control) system recognises any tendency to skid immediately and takes appropriate remedial action, intervening in engine or brake management. This increases traction,

making it easier to accelerate out of a bend or drive off from a standing start. Even in the event of a complete loss of tyre pressure, DSC and its DTC and ABS sub-systems remain fully functional. Such features make driving a pleasure – and guarantee total safety.

www.bmw.com/technologyguide



Dynamic Stability Control (DSC) prevents unstable vehicle conditions such as over- or understeer from occurring, by applying the brakes on one side and thus stabilising the vehicle. Pressing the DTC button activates the DTC Traction Mode. This permits a sportier style of motoring, by allowing a defined degree of wheel slip. DSC will then only intervene in critical situations. In the BMW 130i, DSC includes additional functions such as a Start-off Assistant.



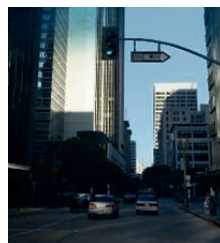
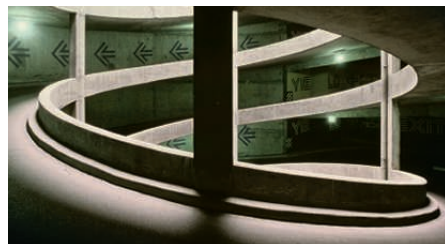
Braking reduces the load on the rear wheels, which can lead to oversteering in bends (1). In brake manoeuvres that are outside the ABS control range, **Cornering Brake Control (CBC)** addresses this tendency by building up unilateral brake pressure (2) in order to create a stabilising counterforce (3).

BMW CONNECTED DRIVE*: DRIVER, VEHICLE AND THE WORLD, INTELLIGENTLY NETWORKED.

Our world is becoming more closely connected every day. BMW drivers are used to the fact that their vehicle and the world are connected – that they can request information, communicate via telephone or email and always be up to date while they're on the go. The BMW ConnectedDrive concept encompasses

all the services and innovative technologies that network BMW vehicles and their passengers with the world outside and the traffic around. BMW ConnectedDrive's optional innovations provide greater convenience, safety and infotainment.

* May not be available in all countries.



Infotainment.



USB/audio interface with extended functions. In conjunction with the USB/audio interface and an original iPod USB cable, the album cover for the track being played can be shown on the Control Display in the car (the cover art display function is also available for other devices). The USB/audio interface also allows the software in your BMW to be easily updated, so new mobile phones and music players become fully operational after updating with a USB stick.¹



Bluetooth interface with added functionality (Office). From now on, you can use the time you spend in your car even more effectively. The optional Bluetooth mobile phone preparation in conjunction with a navigation system and the intelligent integration of selected business mobile phones¹, allows you to display emails, appointments, tasks, contacts or SMS messages on the Control Display – or listen to them via the car speakers using the read-aloud function. And thanks to Bluetooth Audio Streaming², wireless playback of music files via selected Bluetooth devices¹ is no problem either. Your personal audio library can even be accessed via the iDrive Controller.

¹ For information on software updating see www.bmw.com/update

² See www.bmw.com/bluetooth for information on compatible devices.

³ A list of music phones enabled for Bluetooth Audio Streaming is available at www.bmw.com/bluetooth

Convenience.



Comfort Access. The Comfort Access system allows you to conveniently lock, unlock and start your car without having to hold the remote control in your hand. Once you touch the tailgate or the exterior door handles on the driver or passenger's side, your identity will be verified via radio communication between the vehicle and remote control. Once you've been successfully identified, the central locking opens the door or tailgate. Then as soon as the remote control has been recognised by one of the vehicle's interior antennas you can start the engine – without the key – by pressing the Start/Stop button.

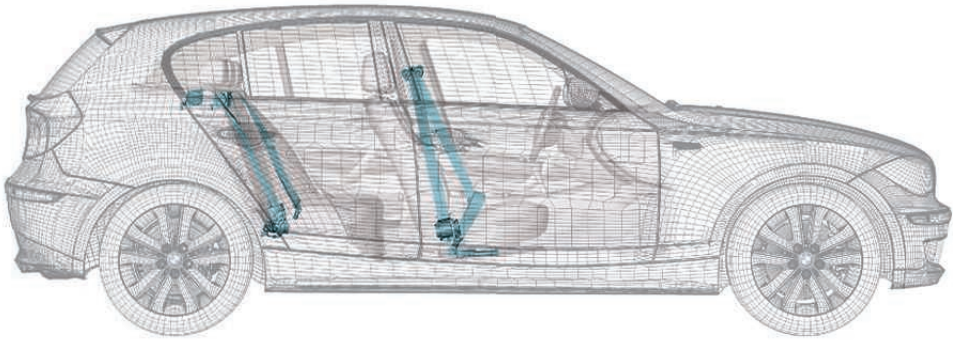
Safety.



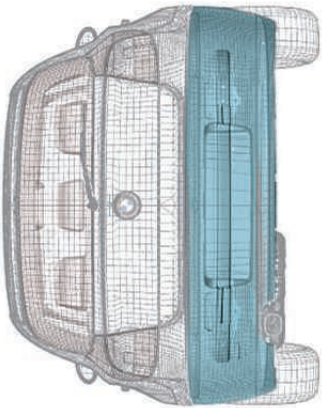
High-beam assistant. No unintentional dazzle – the optional High-beam assistant recognises light sources in the car's environment and switches the high beam on and off, according to the traffic situation. When the system is active, a sensor at the back of the rear view mirror monitors the traffic and lighting conditions. Based on these sensor images, the assistant decides whether or not the high beam should be switched on. When it detects vehicles ahead, or finds that ambient light is sufficient, the high beam is switched off again.

THE MORE YOU KNOW ABOUT IT, THE MORE YOU'LL LIKE IT.

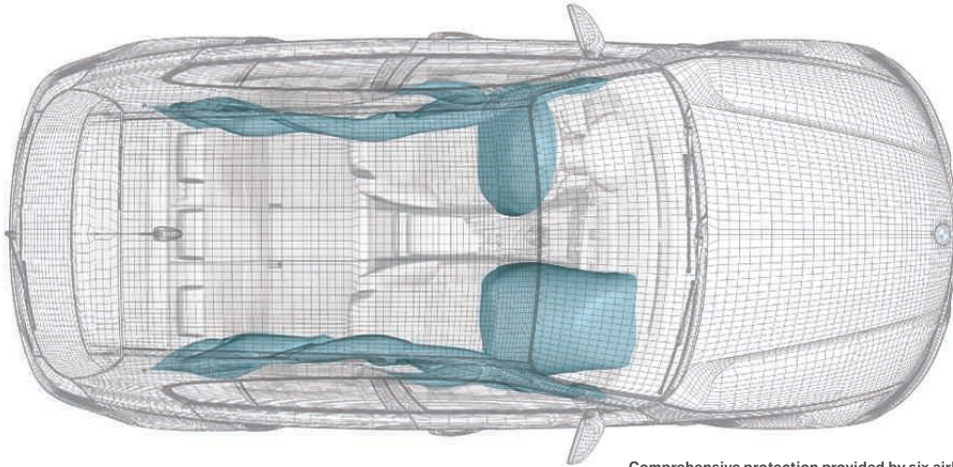
For BMW, safety is paramount. In the NCAP crash tests, the BMW 1 Series received top marks for occupant protection – five stars. Below are five reasons why.



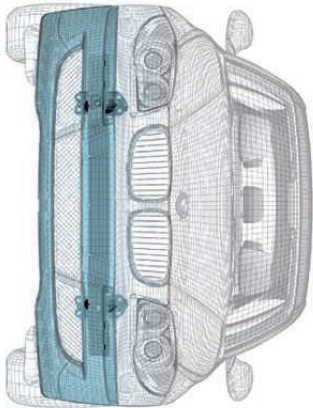
Belt system: The seatbelts are comfortable to wear and benefit from an ideal belt geometry. In the front, they are equipped with pyrotechnical belt tensioners and belt force limiters while at the rear, an ergonomic restraint system comprising three-point seatbelts, a third headrest (depending on equipment) and integrated belt catches ensures safety on all seats.



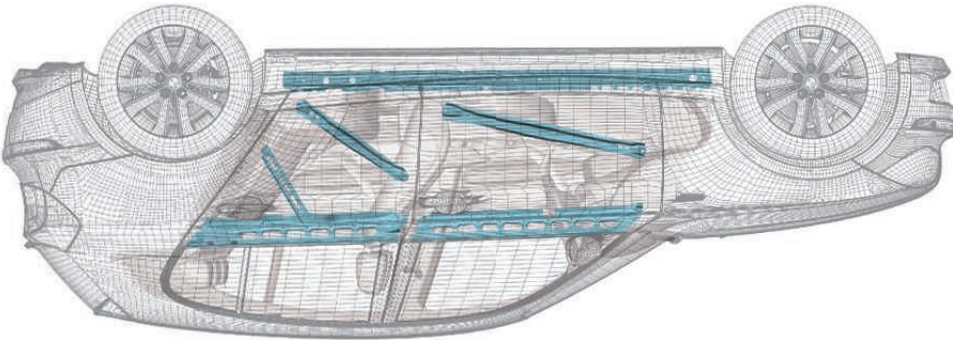
The rear bumper includes steel impact absorber units, which are reversible after impacts at speeds of up to 4 km/h. Replaceable crumple elements at the front and rear reliably prevent damage to the car's body for impact speeds up to 15 km/h.



Comprehensive protection provided by six airbags: Driver and front passenger airbags, seat-integrated side airbags at the front, and two front-to-rear head airbags with splinter protection, which stretch across the entire length of the side windows.



The front bumper features integrated steel impact absorber units that absorb impact forces of up to 4 km/h without any damage to the reversible crumple elements.



Extremely stiff body: The underbody structure features high-strength steel components and special reinforcements. It forms the basis for the occupant cell, which benefits from very strong pillars and crossmembers to provide all occupants with a stable survival space in an emergency.

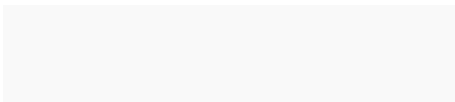
■ Standard equipment

□ Optional equipment

The following pages show the colours and materials available for the BMW 1 Series. Use them to identify your favourite colours, or compare various combinations. These colour samples are intended as an initial guide, however experience has shown that printed versions of paint and upholstery colours cannot in all cases faithfully reproduce the colour appearance of the originals. We therefore recommend that you consult your BMW partner on your preferred colour choices, who will be happy to show you original samples and assist you with special requests.

Exterior colours

■ Non-metallic 300 Alpine White



■ Non-metallic 668 Black



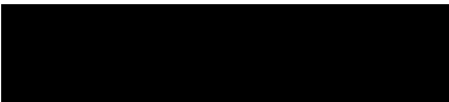
■ Non-metallic A61 Crimson Red



□ Metallic 354 Titanium Silver



□ Metallic 475 Black Sapphire



□ Metallic A52 Space Grey



□ Metallic A76 Deep Sea Blue



□ Metallic 896 Bluewater



□ Metallic A51 Montego Blue



□ Metallic 381 Le Mans Blue⁷



□ Metallic B09 Marrakesh Brown⁶

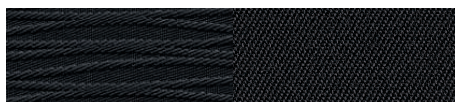


Upholstery colours

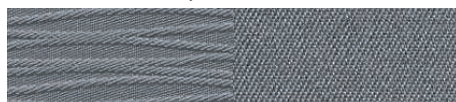
☐ Flashpoint cloth/Sensatec upholstery GCSW Black⁵



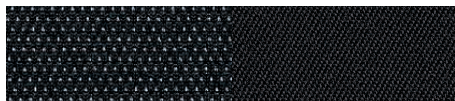
☒ Elektra cloth EAAT Anthracite¹



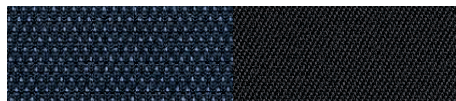
☒ Elektra cloth EAAL Alaska Grey¹



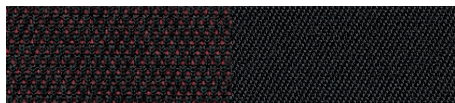
☐ Network cloth AUAT Anthracite²



☐ Network cloth AUD9 Monaco Blue²



☐ Network cloth AUF8 Cranberry Red²



¹ Not in conjunction with sport seats.

² Standard with 130i and 123d.

³ Optional roofliner in Anthracite recommended.

⁴ Only in conjunction with sport seats.

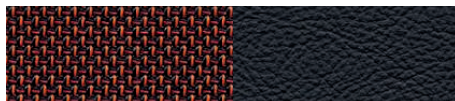
⁵ Standard for M Sports package.

⁶ Only available in conjunction with Lifestyle Edition.

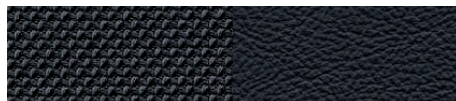
⁷ Only available in conjunction with M Sports package or Sports Edition.

For more combination options please contact your BMW partner. Please note that even normal long or short term use can lead to unrecoverable upholstery damage. This can be caused in particular by non-colourfast clothing.

☐ Pearlpoint cloth/leather upholstery FHF5 Orange^{3,4}



☐ Pearlpoint cloth/leather upholstery FHAT Anthracite⁴



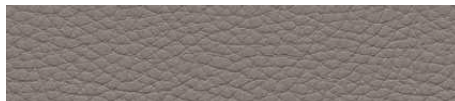
☐ Boston leather LWSW Black



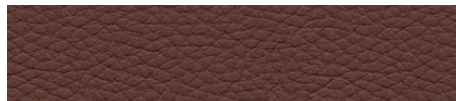
☐ Boston leather LWB7 Lemon³



☐ Boston leather LWA5 Beige



☐ Boston leather LWB8 Terra



■ Standard equipment

□ Optional equipment

Interior colours

Black



Beige



Interior trims

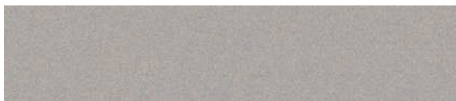
■ 4AK Silver



□ 4CG Satin Silver, matt¹



□ 4B1 Cashmere Silver



□ 4B3 Brushed Aluminium with accent line



□ 4MG Aluminium Glacier Silver[®]



□ 4AT Black, high-gloss



□ 4A3 Fine-wood trim Burr Walnut, light



□ 4AS Fine-wood trim Poplar Grain, Grey



Combinations

Interior colours	Flashpoint cloth/ Sensatec ³	Elektra cloth ²	Network cloth ³	Pearlpoint cloth/leather upholstery ^{1,7}	Boston leather ⁶
Standard seats		● ●	● ● ●		● ● ● ●
Sport seats			● ● ●	● ●	● ● ● ●
Upholstery colours	Black	Anthrakit Alaska Grey	Anthrakit Monaco Blue Cranberry Red	Orange ⁵ Anthracit	Black Lemon ² Beige Terra
Interior colours					
	Black	Black Black	Black Black Black	Black	Black Black Beige Black
Exterior colours					
Non-metallic 300 Alpine White		● ●	● ● ●	● ●	● ● ● ●
Non-metallic 668 Black		● ●	● ● ●	● ●	● ● ● ●
Non-metallic A61 Crimson Red		●	●	●	● ●
Metallic 354 Titanium Silver		● ● ●	● ● ●	● ●	● ● ● ●
Metallic 475 Black Sapphire		● ● ●	● ● ●	● ●	● ● ● ●
Metallic A52 Space Grey		● ● ●	● ● ●	● ●	● ● ● ●
Metallic A76 Deep Sea Blue		● ● ●	● ● ●	● ●	● ● ● ●
Metallic 896 Bluewater		● ● ●	● ● ●	● ●	● ● ● ●
Metallic A51 Montego Blue		● ● ●	● ● ●	● ●	● ● ● ●
Metallic 381 Le Mans Blue ⁸		● — —	— — —	— —	● ● ● ●
Interior trims					
4AK Silver		● ●	● ● ●	● ●	● ● ● ●
4CG Satin Silver, matt ¹		● ●	● ● ●	● ●	● ● ● ●
4B1 Cashmere Silver		●	●	●	● ● ● ●
4B3 Brushed Aluminium with accent line		● ● ●	● ● ●	● ●	● ● ● ●
4MG Aluminium Glacier Silver ⁸		— —	— — —	— —	● ● ● ●
4AT Black, high-gloss		● ● ●	● ● ●	● ●	● ● ● ●
4A3 Fine-wood trim Burr Walnut, light		● ●	● ● ●	● ●	● ● ●
4AS Fine-wood trim Poplar Grain, Grey		● ● ●	● ● ●	● ●	● ● ● ●

Standard equipment

Optional equipment

●

Recommended colour combination

¹ Standard with 120i, 130i, 120d and 123d.

² Not in conjunction with sport seats.

³ Standard with 130i and 123d.

⁴ Only in conjunction with sport seats.

⁵ Optional roofline in Anthracite recommended.

⁶ Boston leather includes seat surfaces and headrests on the front and outside rear seats.

⁷ Pearlpoint upholstery includes the inner side sections of the seat surfaces, backrests and headrests in leather, with the centre part of the seat surfaces and backrests and side section of the headrest in cloth.

⁸ Standard with M Sports package.

⁹ Only available in conjunction with M Sports package or Sports Edition.

For more combination options please contact your BMW partner.



CLASSIC.

This could be your new business attire: the BMW 1 Series in Titanium Silver metallic paint, upholstered in Alaska Grey Elektra cloth, with Poplar Grain, Grey fine-wood trim.

Equipment of model shown:

Exterior colour:	Titanium Silver metallic
Upholstery colours:	Elektra cloth Alaska Grey
Interior trim:	Fine-wood trim Poplar Grain, Grey
Optional equipment:	Radio Professional, air conditioning, Harman Kardon Surround Sound System, storage package



DYED IN THE WOOL.

A BMW 1 Series in Alpine White combined with sport seats featuring Pearpoint cloth/ leather upholstery in orange, as well as accent line interior trim in Brushed Aluminium, undeniably attracts attention.

* Not available in all countries. Please consult your BMW partner.

Equipment of model shown:

Exterior colour:	Alpine White, non-metallic
Upholstery:	Pearpoint cloth/leather in orange
Interior trim:	Brushed Aluminium with accent line
Optional equipment:	Sports leather steering wheel with multifunction buttons, sport seats, automatic air conditioning, Navigation system Professional*



AS INDIVIDUAL AS YOUR TASTE.

The only limits to the equipment and decor for the BMW 1 Series are those of your imagination. You could, for example, opt for the pictured combination of Deep Sea Blue with upholstery in Network Anthracite and a Satin Silver, matt interior trim. Or you could choose almost any other combination imaginable.

* Not available in all countries. Please consult your BMW partner.

Equipment of model shown:

Exterior colour:	Deep Sea Blue metallic
Upholstery:	Network cloth Anthracite
Interior trim:	Satin Silver, matt
Optional equipment:	Sports leather steering wheel with multifunction buttons, automatic transmission Steptronic, automatic air conditioning, Navigation system Professional*





JOY IS ALWAYS STYLISH. THE LIFESTYLE EDITION.

The appearance of these exclusive Edition models clearly evokes a sense of timeless elegance and makes a particularly sophisticated impression. Perfectly matching colours and exterior and interior designs reserved for the Lifestyle Edition create a harmonious overall effect sure to set your pulse racing. The BMW 116i Lifestyle Edition in optional Marrakesh Brown metallic shown here features impressive optionally available 18" light-alloy wheels in V-spoke styling 263. Chrome-plated exhaust tailpipes and body colour exterior parts also add to its attraction. The B-pillar trim, the window recess finishers, the mirror base and exterior mirrors all come in high-gloss Black. It is, after all, this level of attention to detail that makes all the difference.



The first thing that strikes you about the BMW 1 Series Lifestyle Edition's interior is its refined, well thought-out overall design. Every detail appears to be cast in the same mould. The optional Pearlpoint cloth/leather upholstered sport seats (pictured left) or the standard Network cloth upholstery (pictured above) – both with a Magma Brown/Black colour combination – as well as the interior trim in Marrakesh Brown metallic create a warm and stylish atmosphere. The BMW Individual roofliner in elegantly understated Anthracite adds the finishing touches to the perfectly unified interior design. Even as you get into the car, the front door sill finishers with chrome-plated "BMW Edition" lettering deliver a clear message: you value individuality and style.



DYNAMIC PERFORMANCE YOU CAN SEE AND FEEL. THE SPORTS EDITION.



Even at first glance, the sporty character of the BMW 130i shown here is very much evident. Featuring Bluewater metallic finish, Black high-gloss window recess finishers and side window edging (BMW Individual High-gloss Shadow Line) this model is further accentuated by 18" M light-alloy wheels with double-spoke 261 M design. The Ferric Grey metallic rims make the wheels appear somewhat darker and intensifies the vehicle's athletic appearance. The M Sports package comes as standard with this Edition and contains a range of sporty features. In addition, standard fog lights and the grey shade band windscreen ensure optimal vision, while the Blackline rear lights complement the rear's sporty design. In short: dynamic performance that can be seen as well as felt.

Whether in Black Flashpoint cloth/Sensatec upholstery (pictured right) or optionally in elegant Black Boston leather (pictured above), the sport seats for driver and passenger in this Edition are a safe bet. The contrasting Royal Blue stitching of both upholstery versions creates a visually pleasing effect and perfectly complements the overall design concept of the car. The interior boasts an M leather steering wheel with excellent grip and multifunction buttons. High-quality Glacier Silver aluminium interior trim and foot mats with Royal Blue piping and the stainless steel pedals together with the Anthracite BMW Individual roofliner combine to make an extremely sporty package indeed. And every time you get into your BMW, the front door sill finishers with chrome-plated "BMW Edition" lettering are a pleasant reminder of the great choice you made.



■ Standard equipment

□ Optional equipment



□ **M Sports package:** Comprises a special aerodynamics package and matching BMW light-alloy wheels with mixed tyres. This dynamic look is complemented by exterior parts in body colour, the optional Black Sapphire exterior colour, shown here, the M sports suspension and Shadow Line trim as well as Chrome Line Exterior (for BMW 1 Series 3-door models). The interior comes with sport seats featuring exclusive Flashpoint cloth/Sensatec upholstery¹, an M leather steering wheel, and interior trim in Glacier Silver for a distinctly sporty look and feel. Exterior colour Le Mans Blue metallic¹ is available exclusively for this model.



M leather steering wheel: The thicker steering wheel rim offers excellent grip. The optional multifunction buttons enable you to operate the radio, CD drive and phone (optional) while driving. The handbrake lever and gaitor are in Walknappa leather.



Sport seats: For excellent side support (shown here with optional Boston Black leather). The Flashpoint cloth/Sensatec upholstery is available exclusively for the M Sports package.



Glacier Silver Aluminium interior trim: Adds a sporty touch and underscores the individual character of the M Sports package.

¹ Your BMW partner will be happy to show you the corresponding colour samples.



M door sill finishers: with M logo and polished chrome inserts. The BMW 1 Series 3-door features a different version. Please ask your BMW partner for more information.



17" M light-alloy wheels double-spoke 207 M with mixed runflat tyres: front 7 J x 17 with 205/50 R 17 tyres, rear 7.5 J x 17 with 225/45 R 17 tyres.



18" M light-alloy wheels double-spoke 208 M with mixed runflat tyres: front 7.5 J x 18 with 215/40 R 18 tyres, rear 8.5 J x 18 with 245/35 R 18 tyres.

■ Standard equipment

□ Optional equipment



□ **Xenon Headlights for high and low beam incl. LED taillights**, daytime driving lights as well as four light rings and automatic headlight range control, for better road illumination at night or in bad weather.

□ **Adaptive Headlights with variable light distribution incl. turning lights** for improved visibility in bends: the electromechanically controlled headlights are directed into the bend as soon as the vehicle starts cornering.

□ **High-beam assistant** aides safer night driving by automatically switching between high and low beam when traffic is approaching or ahead, and when street lighting is sufficient.



□ **Headlight washing system** ensures optimum road illumination in all weather conditions. When the lights are on, the headlights are automatically cleaned in parallel with the windscreen.



□ **Fog lights** integrated in the front apron ensure extra safety in poor visibility. Option includes exterior mirror heating and windscreen washer jets (standard on the 130i and 123d).



□ **Lights package** comprises entry area lighting, which upon unlocking the doors illuminates the area outside the doors for 20 seconds to enable safe vehicle access in the dark. Also included: reading lights front and rear with ambient lighting, footwell illumination at the front, vanity mirror lights for driver and front passenger.



□ **Chrome Line Exterior**, for BMW 1 Series 3-door models (standard with 130i and 123d), encompasses side window edging front and rear, window recess finishers, door sill finishers with chrome inserts, the mirror base and mirror frame in high-gloss Black.



□ **Shadow Line** (standard with 130i and 123d 5-door) encompasses the side window edging front and rear, the window recess finishers (for the BMW 1 Series 3-door), the mirror base and mirror frame in high-gloss Black.



□ **Rain sensor** incl. automatic driving lights control: once activated, the rain sensor will automatically switch on the windscreen wipers when it begins to rain, adjusting the wiper frequency in line with rainfall intensity. The integrated automatic driving lights control activates the low beam automatically at dusk and in tunnels.



■ **Exterior mirrors**, painted in body colour, with electric adjustment, aspheric on driver side. The mirrors on the 130i and 123d are also heated.



□ **Park Distance Control (PDC)**, available for front and rear or rear only, facilitates parking and manoeuvring in confined spaces, giving you an acoustic signal for the distance between your car and an obstacle. In conjunction with a navigation system there is also a visual signal in the Control Display.



□ **Tow bar** with removable ball head.



■ **Brake Force Display** helps vehicles travelling behind you to evaluate your braking more accurately: in the event of an emergency stop, the illuminated area of the brake lights is increased. So traffic following behind can tell in an instant the difference between a light tap on the brake pedal and a hard stop – for increased driving safety.

■ Standard equipment

□ Optional equipment



□ **16" light-alloy wheels V-spoke 229¹**, 6.5 J x 16, with 195/55 R16 tyres (116i, 118i, 116d and 118d); 7 J x 16, with 205/55 R16 tyres (120i and 120d). Also available as a complete winter wheel set from the Original BMW Accessories range* (only available for 116i, 118i, 120i, 116d, 118d, 120d).



■ **16" steel wheels with full wheel covers¹**, 6.5 J x 16, 195/55 R 16 tyres (standard on 116i, 118i, 116d and 118d) and 7 J x 16, 205/55 R 16 tyres (standard on 120i and 120d).



□ **16" light-alloy wheels double-spoke 222¹**, 7 J x 16, 205/55 R 16 tyres.



□ **16" light-alloy wheels V-spoke 360¹**, 7 J x 16, 205/55 R 16 tyres.

* May vary by country.

¹ Inclusive BMW Mobility Set or optional with runflat tyres. The availability of runflat tyres may vary by country.



□ 18" light-alloy wheels V-spoke 217 with mixed runflat tyres, front 7.5 J x 18 with 215/40 R 18 tyres, rear 8.5 J x 18 with 245/35 R 18 tyres.



□ 17" light-alloy wheels star-spoke 256 with runflat tyres, 7 J x 17, 205/50 R 17 tyres (standard on 130i). Also available as a complete winter wheel set from the Original BMW Accessories range* (only available for 123d and 130i).



□ 17" light-alloy wheels V-spoke 141 with runflat tyres, 7 J x 17, 205/50 R 17 tyres (standard on 123d).



□ 17" light-alloy wheels star-spoke 142 with mixed runflat tyres, front 7 J x 17 with 205/50 R 17 tyres, rear 7.5 J x 17 with 225/45 R 17 tyres.

■ Standard equipment

□ Optional equipment



■ **Standard steering wheel** (diameter 375 mm), three spokes.



□ **Sports leather steering wheel** (diameter 369 mm) with thumbrests (in conjunction with gearshift paddles on the steering wheel without thumbrests), chrome clasp, three spokes (standard with 130i and 123d).



□ **Leather sports steering wheel with multifunction buttons** (diameter 369 mm), chrome clasp, three spokes, with multifunction capability for remote control of radio and telephone (optional).

□ **Steering wheel heating** for sports leather steering wheel with multifunction: just press a button to quickly warm up the steering wheel rim – a particularly pleasant amenity in winter.



□ **M leather steering wheel** (diameter 369 mm), three spokes, optionally with multifunction buttons for remote control of radio and telephone (optional). With manual transmission, the M gear lever knob comes with the M emblem. The handbrake lever and gaitor are in Walknappa leather.



■ **Instrument panel** with analogue instruments and red backlighting: speedometer, LC display for mileage counter, trip counter and on-board computer, plus tachometer with integrated fuel gauge.



■ **Auto Start/Stop display** (for all four-cylinder models in conjunction with six-speed manual transmission) appears on the Info Display and indicates when the engine has been switched off by the Auto Start/Stop function (e.g. at traffic lights or in a jam). The signal disappears when the engine is automatically restarted.



■ **On-board computer**, provides information about average speed, average and current fuel consumption, range and outside temperature. It also features an acoustic ice warning.



■ **Optimum Shift Indicator** shows when switching to another gear would be more fuel-efficient. The system recommends when to switch to a higher or lower gear, as appropriate to your driving style. For example, when accelerating it signals whether to carry on accelerating in a higher gear, thereby saving fuel (for vehicles with six-speed manual transmission).



■ **Start/Stop button** to start the engine.

Insert the radio remote control unit into the ignition switch, and you can then start and stop your BMW simply by pressing this button.

□ **Comfort access system** to open, start and close the vehicle without having to reach for the radio remote control unit. The engine can be started without a key.



□ **Cruise Control** stores and maintains a desired speed above approx. 30 km/h (activated using the left-hand steering-column stalk). After accelerating, the vehicle automatically returns to the previously stored speed. Braking cancels the setting.



□ **Navigation system Professional***, including radio Professional with DVD drive, iDrive Controller with direct menu control buttons, eight functional bookmarks, integrated hard disc for maps and audio data, fixed and high-resolution 8.8" graphic display for 3D maps and the bird's eye view.



□ **Navigation system Business*** including radio Professional with CD drive, iDrive Controller with direct menu control buttons, functional bookmarks, integrated hard disc for navigation data, map or a combined arrow and map display and a high-resolution 6.5" display.



■ **BMW Assist*^{1,2}** supports the driver with an automatic and manual emergency call function, enabling your vehicle's location to be pinpointed to the metre and Traffic Info plus, which enables SMS and address data to be sent to your BMW. Additionally you benefit from a free, round-the-clock personal information service.



□ **Storage compartment package** incl. luggage nets on back of front seats, cup holders, 12 V socket in luggage compartment, 2 foldable fastening points, storage net on the right, 2 tensioning belts on luggage compartment floor and one storage compartment on the dashboard (not in conjunction with a navigation system).



□ **Automatic air conditioning** (shown here), with AAR, microfilter, fogging and solar sensors and ALL button, quickly establishes and maintains the selected temperature. With separate temperature control for left and right sides.

□ **Air conditioning**, with microfilter, for a comfortable interior at any time of the year (standard on 130i and 123d).

■ **Heating system** with six air outlets.



■ **Six-speed manual transmission** for a particularly sporty drive. Immensely smooth, with perfect ratios and precise, short-throw gearshifts. The addition of a sixth gear means that the gear ratios are more closely spaced, enabling you to make even more individual use of the engine's power.

¹Shown here is the 8.8" graphic display of the Navigation system Professional

²Can be used free of charge for the first three years.

*Not available in all countries. Please consult your BMW partner.



□ **Six-speed automatic transmission Steptronic** (here with standard non-smoker package) with Adaptive Transmission Management (ATM) and Steptronic (not for 116d). This transmission performs very fast, flawless gearshifts – for maximum dynamic performance (in 130i with additional gearshift paddles mounted on the steering wheel, in 123d optionally available gearshift paddles on the steering wheel).

■ Standard equipment

□ Optional equipment



■ **AUX-IN connection**, incl. 12 V socket for an external audio source such as an MP3 player.

□ **USB/audio interface** for connection of a USB stick or MP3 player, optional comfort connection for a mobile phone music player¹. In conjunction with a navigation system, the cover art of the album being played can be shown on the Control Display. Operation via multifunction steering wheel (optional), radio Professional or the new iDrive Controller. A multimedia bag is available along with the optional front armrest.



■ **Radio Business CD** incl. UKW and MW reception, six station buttons, automatic volume adjustment, MP3-compatible CD drive and five loudspeakers.

□ **Radio Professional**, same features as radio Business CD, plus connection for CD changer, a two-line display (shown here) as well as a subwoofer under the front passenger seat.



□ **Harman/Kardon Surround Sound System** with powerful amplifier, equalizer, centre speaker and 10 loudspeakers for superb sound. Surround sound function enables simulation of various acoustic environments.

□ **HiFi loudspeaker system** with eight loudspeakers for brilliant sound.



□ **CD changer** located on the left-hand side of the luggage compartment, can take up to six CDs.



■ **Front electric windows**, pull/press switch and open/close fingertip control, all-round comfort closing function and trap release.

■ **Rear electric windows** (available only with BMW 1 Series 5-door models).



□ **Mobile phone preparation Business with Bluetooth interface**^{*2} (incl. hands-free kit, connection for recharging and external aerial). A separately available snap-in adapter enables connection of a Bluetooth-compatible mobile phone, which can also be operated via the iDrive Controller (in conjunction with a navigation system).
□ **Hands-free kit** (only in conjunction with Radio Professional).



□ **Cup holder**, can be hooked into place, incl. holder on the centre console.

¹ USB cable shown is not part of the package.

² For information on recommended devices see

www.bmw.com/bluetooth

^{*}Not available in all countries. Please consult your BMW partner.



□ **Front armrest**, folding, with integrated storage compartment.



■ **Standard seats** (shown here with optionally available Boston leather upholstery in Beige) with manual adjustment, including seat height adjustment for the driver's seat.



□ **Sport seats** for driver and front passenger (shown here with optionally available Boston leather upholstery in Black), with infinitely variable electric backrest width adjustment for optimum lateral support, plus manual adjustment of fore-and-aft position, seat height, backrest angle, seat angle and thigh support.



□ **Seat adjustment** for driver and front passenger with electric seat height and backrest adjustment, as well as back/forwards and seat angle adjustment, with memory function for driver's seat and exterior mirrors (including automatic parking function). Two personalised positions can be stored for the settings of the driver's seat and the exterior mirrors.



□ **Seat heating** (with 3 levels) for driver and front passenger, seat surface and backrest, including side supports, can be heated for an almost instant cosy feeling of warmth (shown here with air conditioning).



□ **Lumbar support** for driver and front passenger, electrically adjustable in height and length, for an ergonomically perfect seat position and support of the back muscles.



■ **Headrest in centre**, foldable.
□ **Headrests**. Optionally, all rear headrests are foldable; the foldable middle headrest comes as standard (on the BMW 1 Series 3-door only together with five-seat option).



□ **A five-seat option** is available on the 3-door BMW 1 Series. This includes three rear headrests, three-point belts on all seats, with integrated belt catch for the outer seats (standard on BMW 1 Series 5-door models).



□ **Ski bag** enables clean and safe transportation of up to four pairs of skis with up to four people on board. If the ski bag is not required, it can be stored out of sight to save space.

■ Standard equipment

□ Optional equipment



□ **Rear storage tray**, between the two rear seats offers additional storage capacity (only available for BMW 1 Series 3-door four-seater models).



■ **ISOFIX child seat attachment, rear** on the two outer rear seats for safe attachment of a child seat with clip-in plug connectors and additional fastening points in the upper section.

□ **ISOFIX child seat attachment** for passenger seat. Passenger airbag can be deactivated via key.



□ **Glass sliding/vent roof**, electric, with comfort opening function via the remote control unit.



□ **Luggage compartment partition net** protects the passenger area from falling objects should the vehicle brake hard. The partition net only works when the rear seat backrest is folded down.



■ **Luggage compartment**, illuminated and with all-round textile lining; safe transportation is ensured by an elastic strap on the left-hand side and fastening points on the inside edge.



■ **Rear backrest**, 60/40 split, folds down to create an almost level luggage compartment floor.



□ **Interior mirror**, with automatic anti-glare function and large surface area; the glare from following vehicles is automatically reduced when the amount of incident light exceeds a defined limit.



■ **Personal Profile:** The Personal Profile stores your personal preferences depending on equipment for settings such as the temperature and air distribution settings of the automatic air conditioning, the position of the driver's seat and exterior mirrors, and the volume and sound settings of the radio. These settings are then activated when your key is used to unlock the central locking.



□ **BMW Welt:** Taking delivery of a car has always ranked among the best moments for any car driver. Now that moment can become a truly unforgettable day – at BMW Welt, the experience and delivery centre in Munich, Germany. Visit the Museum, tour the plant or explore the Technology studio. BMW Welt brings you the true fascination of BMW. Experience more online at www.bmw-welt.com

BMW 130i: Its stylish character can be recognised in the 17" star-spoke 256 light-alloy wheels with runflat tyres, and details such as the chrome kidney grille slats and chrome-finished twin tailpipes. Standard interior equipment includes a leather sports steering wheel and special instrument panel with extended display ranges, as well as chrome door sill finishers at the front and rear, air conditioning and Network cloth upholstery.



■ The front grille for the 130i comes with chrome-finished vertical slats and chrome surround.



■ Tailpipes: This exhaust system comprising two sporty, matt chrome tailpipes is standard on the 130i.



■ The instrument panel in the 130i features special scaling with an extended display and an oil temperature gauge.



□ Steering wheel gearshift paddles (in conjunction with six-speed automatic transmission Steptronic) for particularly dynamic driving; available for the sports leather steering wheel or the M leather steering wheel (shown here with Aluminium Glacier Silver interior trim).



BMW Performance aerodynamic kit, BMW Performance carbon roof spoiler, 18" light-alloy wheels double-spoke 269.

UNCOMPROMISINGLY EXCITING. BMW PERFORMANCE*.

By choosing a BMW, you are expressing a preference for athleticism, powerful dynamics and innovative automotive technologies. These are uncompromising values. And they're values that you can make even more striking: with the BMW Performance product range. A myriad of technical and aesthetic components related to aerodynamics, the chassis, cockpit and drive train serve one united aim: to transform outstanding dynamics into an even more intense

experience. The BMW Performance product range is designed for people who are excited by stand-out technical performance and want to express that enthusiasm. Your BMW Service partner will be happy to advise you and provide you with a special catalogue detailing the entire range of BMW Performance accessories. For more information visit:

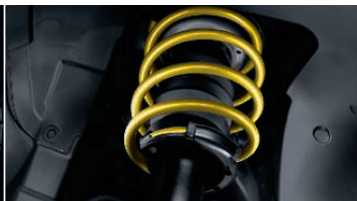
www.bmw.com/performance



BMW Performance carbon mirror caps.



BMW Performance braking system.



BMW Performance chassis.



BMW Performance sports steering wheel.¹



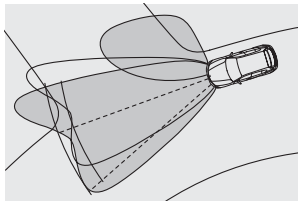
BMW Performance gear lever knob.



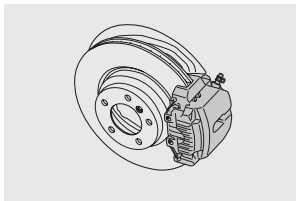
BMW Performance carbon interior trims.

¹ Must be used in strict compliance with road traffic law.

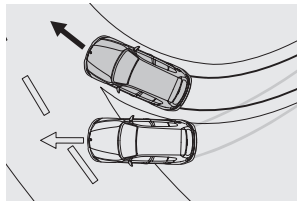
* May not be available in all countries.



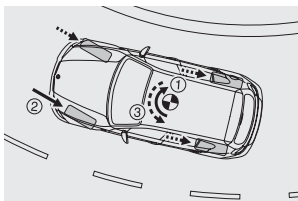
□ **Adaptive Headlights with variable light distribution incl. turning lights** optimally illuminate bends by electro-mechanically swivelling the headlights in the horizontal axis when the driver turns the wheel.



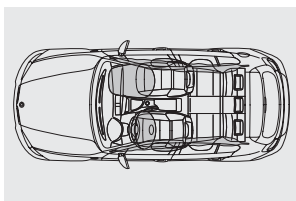
■ **Disc brakes** all-round (inner-vented at the front, in the 118d, 120d, 123d and 130i also at the rear), specially designed to ensure maximum driving safety and easy operation. The brake system combines a long service life with short braking distances.



■ **Dynamic Stability Control (DSC)** incl. CBC and Brake Assistant with additional functions for the 130i. DSC recognises the risk of swerving from the start and stabilises the car in milliseconds. Traction Mode (DTC) is a sub-function allowing increased wheel slip in order to optimise propulsive power in certain situations and enable a sportier style of driving.



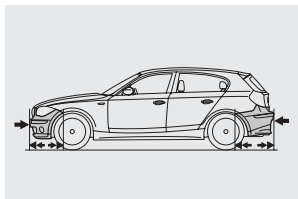
■ **Cornering Brake Control (CBC)** increases vehicle stability when braking gently in a fast bend. During braking manoeuvres, the load on the rear wheels is reduced, which can lead to oversteering (1). In brake manoeuvres that are outside the ABS control range, CBC addresses this tendency by building up unilateral brake pressure (2) in order to create a stabilising counterforce (3).



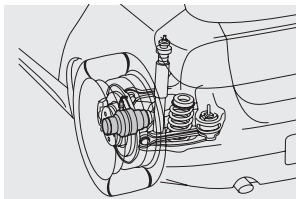
■ **Airbags:** in a BMW, all safety features complement each other perfectly. There are six airbags to provide specific protection: driver and front passenger airbags, the front-to-rear head airbags as well as side airbags integrated in the front seat backrests.



■ **BMW safety restraint system** for driver and front passenger. A combination of three-point seatbelt, pyrotechnic belt tensioner, belt force limiter and active headrests in the front provide the best possible restraint in the event of a collision.

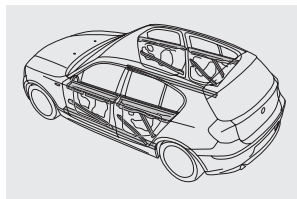


■ **Bumpers** survive impacts of up to 4 km/h without damage. Special crumple elements at the front and rear absorb forces of up to 15 km/h.



□ **Runflat tyres:** Reinforced side walls prevent the tyres from completely collapsing or loosening from the rim if the air pressure drops (standard on light-alloy wheels 17" and larger)*.

■ **Runflat indicator** minimises the risks associated with tyre defects. The system detects air pressure changes in the tyres and then warns the driver by activating a Check/Control lamp.



■ **Door reinforcements** offer maximum protection in the event of a side impact. Added strength is provided by diagonal safety bars in the doors (shown here on the BMW 1 Series 5-door model).

* The availability of runflat tyres may vary by country.

■ Standard equipment □ Optional equipment — Not available

Safety	116i	118i	120i	130i	116d	118d	120d	123d
Airbags:								
– Driver and front passenger airbags	■	■	■	■	■	■	■	■
– Front-to-rear head airbags (curtain) with splinter protection	■	■	■	■	■	■	■	■
– Side airbags for driver and front passenger, integrated in seatback	■	■	■	■	■	■	■	■
BMW Service Inclusive encompasses all kinds of service and maintenance work carried out at participating BMW partners worldwide. Individual contract length and service level can be selected	□	□	□	□	□	□	□	□
Brake Force Display	■	■	■	■	■	■	■	■
Brakes:								
– Disc brakes at the front, inner-vented	■	■	■	■	■	■	■	■
– Disc brakes at the rear, for 118d, 120d, 123d and 130i inner-vented	■	■	■	■	■	■	■	■
Central locking with electronic immobiliser and crash sensor; fuel tank filler cap integrated in central locking	■	■	■	■	■	■	■	■
Centre lock switch	■	■	■	■	■	■	■	■
Dynamic Stability Control (DSC, incl. ABS, CBC and DTC)	■	■	■	–	■	■	■	■
Dynamic Stability Control (DSC) with additional functions	–	–	–	■	–	–	–	–
Headrests, front	■	■	■	■	■	■	■	■
ISOFIX child seat fastening system, front	□	□	□	□	□	□	□	□
ISOFIX child seat fastening system, rear	■	■	■	■	■	■	■	■
Safety bodyshell:								
– Bumpers with steel impact absorber units at the front and rear, regenerating after impacts at up to 4 km/h, crumple zones at front and rear absorb impacts at up to 15 km/h	■	■	■	■	■	■	■	■
– Side impact protection, integrated in the doors	■	■	■	■	■	■	■	■
Seatbelts:								
– Ergonomic rear seatbelt system with three-point seatbelts for all three seats	■	■	■	■	■	■	■	■
– Inertia-reel seatbelts at the front with belt tensioners and belt force limiters	■	■	■	■	■	■	■	■

Exterior design	116i	118i	120i	130i	116d	118d	120d	123d
Bumpers and protruding door handles in body colour	■	■	■	■	■	■	■	■
Chrome Line exterior , only available for the BMW 1 Series, 3-door	□	□	□	■	□	□	□	■
Exterior parts in body colour (roof trim strips, and lower halves of bumpers)	□	□	■	■	□	□	■	■
Indicator lights, white	■	■	■	■	■	■	■	■
Kidney grille slats in Chrome	–	–	–	■	–	–	–	–
Metallic paintwork	□	□	□	□	□	□	□	□
Rear wiper	■	■	■	■	■	■	■	■
Shadow Line, high-gloss	□	□	□	□ ¹	□	□	□	□ ¹
Tailgate with locking mechanism integrated in logo	■	■	■	■	■	■	■	■
Tow bar with removable ball head, incl. trailer stability control	□	□	□	□	□	□	□	□
Tailpipe with Chrome trim (123d with black pipes; 130i with twin pipes)	–	–	■	■	–	–	■	■

Equipment packages	116i	118i	120i	130i	116d	118d	120d	123d
Advantage package	□	□	□	□	□	□	□	□
Comfort package	□	□	□	□	□	□	□	□
Connectivity package includes mobile phone preparation Business with Bluetooth interface (telematics-compatible), USB/audio interface and extended connection of the mobile phone's music player.	□	□	□	□	□	□	□	□
Dynamics package	□	□	□	□	□	□	□	□
Innovations package	□	□	□	□	□	□	□	□
M Sports package with sports suspension (also available with standard suspension)	□	□	□	□	□	□	□	□

Wheels	116i	118i	120i	130i	116d	118d	120d	123d
Runflat indicator	■	■	■	■	■	■	■	■
Wheels with BMW Mobility Set	■	■	■	—	■	■	■	—
Wheels:								
– 16" steel wheels with full wheel covers, 6.5 J x 16, 195/55 R 16 tyres*	■	■	—	—	■	■	—	—
– 16" steel wheels with full wheel covers, 7 J x 16, 205/55 R 16 tyres*	—	—	■	—	—	—	■	—
– 16" light-alloy wheels V-spoke 229, 7 J x 16, 205/55 R 16 tyres* (for 116i, 118i, 116d, 118d 6.5 J x 16, 195/55 R 16 tyres)	□	□	□	—	□	□	□	—
– 16" light-alloy wheels double-spoke 222, 7 J x 16, 205/55 R 16 tyres*	□	□	□	—	□	□	□	—
– 16" light-alloy wheels V-spoke 360, 7 J x 16, 205/55 R 16 tyres*	□	□	□	—	□	□	□	—
– 17" light-alloy wheels star-spoke 256, 7 J x 17, 205/50 R 17 tyres ⁴	□	□	□	■	□	□	□	□
– 17" light-alloy wheels V-spoke 141, 7 J x 17, 205/50 R 17 tyres ⁴	□	□	□	□	□	□	□	■
– 17" light-alloy wheels star-spoke 142 with mixed tyres, front 7 J x 17 with 205/50 R 17 tyres, rear 7.5 J x 17 with 225/45 R 17 tyres ⁴	□	□	□	□	□	□	□	□
– 18" light-alloy wheels V-spoke 217 with mixed tyres, front 7.5 J x 18 with 215/40 R 18 tyres, rear 8.5 J x 18 with 245/3p R 18 tyres ⁴	□	□	□	□	□	□	□	□

Interior design	116i	118i	120i	130i	116d	118d	120d	123d
BMW Individual roofliner Anthracite	□	□	□	□	□	□	□	□
Door sill finishers , chrome-plated	—	—	—	■	—	—	—	■
Instrument panel , with round speedometer and rev counter displays, as well as fuel gauge and on-board computer display	■	■	■	■	■	■	■	■
Interior trims:								
– Black, high-gloss	□	□	□	□	□	□	□	□
– Brushed Aluminium with accent line	□	□	□	□	□	□	□	□
– Cashmere Silver	□	□	□	□	□	□	□	□
– Fine-wood trim Poplar Grain, Grey	□	□	□	□	□	□	□	□
– Fine-wood trim Burr Walnut, light	□	□	□	□	□	□	□	□
– Silver	■	■	—	—	■	■	—	—
– Satin Silver, matt	□	□	■	■	□	□	■	■
Upholstery:								
– Boston leather	□	□	□	□	□	□	□	□
– Elektra cloth ²	■	■	■	—	■	■	■	—
– Network cloth	□	□	□	■	□	□	□	■
– Pearlpoint cloth/leather ³	□	□	□	□	□	□	□	□

Transmission and technology	116i	118i	120i	130i	116d	118d	120d	123d
4-cylinder in-line diesel engine with 4-valve technology	—	—	—	—	■	■	■	■
4-cylinder in-line petrol engine with 4-valve technology	■	■	■	—	—	—	—	—
6-cylinder in-line petrol engine with 4-valve technology	—	—	—	■	—	—	—	—
6-speed manual transmission	■	■	■	■	■	■	■	■
6-speed automatic transmission Steptronic with gearshift paddles on steering wheel and sports suspension	—	—	—	□	—	—	—	□
6-speed automatic transmission Steptronic	□	□	□	□	—	□	□	□
Active Steering , incl. Servotronic	—	—	—	□	—	—	—	—
Auto Start/Stop function , only in combination with 6-speed manual transmission	■	■	■	—	■	■	■	■
BMW TwinPower Turbo 4-cylinder in-line diesel engine with 4-valve technology	—	—	—	—	—	—	—	■
Brake Energy Regeneration	■	■	■	■	■	■	■	■
Common Rail Technology	—	—	—	—	■	■	■	■

* The availability of runflat tyres may vary by country.

¹ Standard on 130i and 123d, 5-door.² Not in conjunction with sport seats.³ Only in conjunction with sport seats.⁴ Wheels with runflat tyres.

Transmission and technology	116i	118i	120i	130i	116d	118d	120d	123d
Diesel particle filter	—	—	—	—	■	■	■	■
Double-joint spring strut front axle and multi-arm rear axle	■	■	■	■	■	■	■	■
Double-VANOS	■	■	■	■	—	—	—	—
Emissions standard: EU5	■	■	■	■	■	■	■	■
High Precision Injection	■	■	■	—	—	—	—	—
M Sports suspension, lowered by 15 mm	□	□	□	□	□	□	□	□
Optimum Shift Indicator, only in combination with 6-speed manual transmission	■	■	■	■	■	■	■	■
Power Steering	■	■	■	■	■	■	■	■
Servotronic	□	□	□	□	□	□	□	□
Turbocharger with variable turbine geometry	—	—	—	—	■	■	■	—
TwinPower Turbo	—	—	—	—	—	—	—	■
Valvetronic	—	—	—	■	—	—	—	—

Driver assistance	116i	118i	120i	130i	116d	118d	120d	123d
Cruise Control	□	□	□	□	□	□	□	□
Park Distance Control (PDC), front and rear or rear only	□	□	□	□	□	□	□	□

Light and sight	116i	118i	120i	130i	116d	118d	120d	123d
Adaptive Headlights with variable light distribution, incl. turning lights	□	□	□	□	□	□	□	□
Exterior mirror package including fold-in function, heated exterior mirrors, memory function and automatic parking function	□	□	□	□	□	□	□	□
Fog lights, incl. heated exterior mirrors and windscreen washer jets	□	□	□	■	□	□	□	■
Headlight washing system	□	□	□	□	□	□	□	□
High-beam assistant (only in conjunction with Xenon Headlights, rain sensor and interior mirror with automatic anti-glare function)	□	□	□	□	□	□	□	□
Interior and exterior mirrors with automatic anti-glare function, exterior mirror on driver's side aspheric plus content of exterior mirror package	□	□	□	□	□	□	□	□
"Lights On" warning	■	■	■	■	■	■	■	■
Lights package, with entry area lighting integrated in the door handles, ambient lighting, reading lights front and rear, footwell illumination at the front, and illuminated vanity mirrors for driver and front passenger	□	□	□	□	□	□	□	□
Rain sensor, incl. automatic driving lights control	□	□	□	□	□	□	□	□
Sun protection glazing	□	□	□	□	□	□	□	□
Xenon Headlights for high and low beam, incl. taillights with LED-strips, daytime driving lights and four light rings and automatic headlight range control	□	□	□	□	□	□	□	□

Interior features	116i	118i	120i	130i	116d	118d	120d	123d
Air conditioning, incl. microfilter	□	□	□	■	□	□	□	■
Automatic air conditioning with separate temperature control for driver and front passenger, incl. AAR, microfilter, fogging and solar sensors and ALL button	□	□	□	□	□	□	□	□
Heating, incl. microfilter	■	■	■	—	■	■	■	—
Seats/seat comfort:								
— Four-seat option, incl. storage compartment in the rear, only for the BMW 1 Series, 3-door	■	■	■	■	■	■	■	■
— Five-seat option (standard with the BMW 1 Series, 5-door)	□	□	□	□	□	□	□	□
— Lumbar support for driver and front passenger seat, electric	□	□	□	□	□	□	□	□
— Rear seat backrest, foldable, 60/40 split	■	■	■	■	■	■	■	■
— Seat heating for driver and front passenger seats	□	□	□	□	□	□	□	□
— Seat adjustment, electric, with memory function for driver's seat	□	□	□	□	□	□	□	□
— Sport seats for driver and front passenger, with electric backrest width adjustment	□	□	□	□	□	□	□	□
— Standard seats, manual seat adjustment with height adjustment for driver and front passenger	■	■	■	■	■	■	■	■

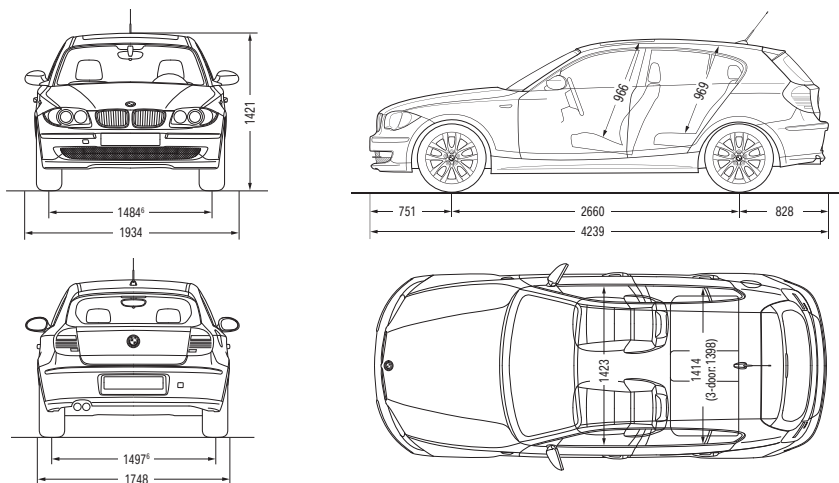
Interior features	116i	118i	120i	130i	116d	118d	120d	123d
Steering wheels:								
– Gearshift paddles on sports leather steering wheel and M leather steering wheel (only in conjunction with automatic transmission)	—	—	—	□	—	—	—	□
– Standard steering wheel	■	■	■	—	■	■	■	—
– Sports leather steering wheel	□	□	□	■	□	□	□	■
– Steering wheel heating for sports leather steering wheel with multifunction buttons	□	□	□	□	□	□	□	□
– M leather steering wheel	□	□	□	□	□	□	□	□
– Multifunction buttons for sports leather steering wheel/M leather steering wheel	□	□	□	□	□	□	□	□

Comfort and interior equipment	116i	118i	120i	130i	116d	118d	120d	123d
Alarm system with radio remote control	□	□	□	□	□	□	□	□
Armrest at the front , foldable with integrated storage compartment	□	□	□	□	□	□	□	□
Comfort access system	□	□	□	□	□	□	□	□
Cup holders , mountable	□	□	□	□	□	□	□	□
Electric windows , pull–press switch with open/close fingertip control on the driver's side	■	■	■	■	■	■	■	■
Glass sliding/vent roof , electric, with comfort opening function via car key	□	□	□	□	□	□	□	□
Glove compartment , illuminated	■	■	■	■	■	■	■	■
Lined luggage compartment , 330–1,150 litre capacity	■	■	■	■	■	■	■	■
Luggage compartment partition net	□	□	□	□	□	□	□	□
Park Distance Control (PDC) , front and rear or rear only	□	□	□	□	□	□	□	□
Personal Profile , personalising important user functions	■	■	■	■	■	■	■	■
Radio remote control for central locking	■	■	■	■	■	■	■	■
Roof grab handles , four	■	■	■	■	■	■	■	■
Ski bag , modular with interchangeable frame	□	□	□	□	□	□	□	□
Start/Stop button	■	■	■	■	■	■	■	■
Storage compartment below the instrument panel on the left-hand side and in the doors	■	■	■	■	■	■	■	■
Storage compartment package incl. storage compartment in upper instrument panel (not available in conjunction with navigation system), nets on front seat backrests, cup holder, 12-V socket, storage net on right wall of luggage compartment, two straps on luggage compartment floor and two fold-down fastening points	□	□	□	□	□	□	□	□
Windscreen with grey shade band	□	□	□	□	□	□	□	□

Entertainment, communication and information	116i	118i	120i	130i	116d	118d	120d	123d
BMW ConnectedDrive – Telematics Services*:								
– BMW Assist	□	□	□	□	□	□	□	□
– BMW Online	□	□	□	□	□	□	□	□
Navigation System Business* , incl. radio Professional with CD drive, iDrive Controller with direct menu control buttons, functional bookmarks, integrated hard disc for navigation data, map or combined arrow and map display and fixed high-resolution 6.5" display	□	□	□	□	□	□	□	□
Navigation System Professional* with high-resolution and fixed 8.8" colour display, separate DVD drive, functional bookmarks, with 3D map and arrow display, as well as bird's-eye view, integrated hard disc for storing maps and audio data, including radio Professional, iDrive Controller with direct menu control buttons	□	□	□	□	□	□	□	□
Navigation System Professional* and Business* with preparation for mobile phone with Bluetooth interface (incl. BMW Assist* and BMW Online*)	□	□	□	□	□	□	□	□
On-board computer , incl. Check Control	■	■	■	■	■	■	■	■
Radio/audio:								
– AUX-IN connection, incl. 12-V socket in centre console	■	■	■	■	■	■	■	■
– CD changer in the luggage compartment, holds up to six CDs	□	□	□	□	□	□	□	□
– HiFi loudspeaker system	□	□	□	□	□	□	□	□
– Harman Kardon Surround Sound System	□	□	□	□	□	□	□	□
– Radio Business CD	■	■	■	■	■	■	■	■
– Radio Professional	□	□	□	□	□	□	□	□
– USB/audio interface (for external MP3 player, upgradeable for comfort access for mobile phone music player)	□	□	□	□	□	□	□	□
Telephone:								
– Hands-free kit (in conjunction with Radio Professional)	□	□	□	□	□	□	□	□
– Mobile phone preparation Business with Bluetooth interface	□	□	□	□	□	□	□	□

Wheels	116i	118i	120i	130i	116d	118d	120d	123d
Tyre dimensions	195/55 R 16 H	195/55 R 16 H	205/55 R 16 V	205/50 R 17 W	195/55 R 16 H	195/55 R 16 H	205/55 R 16 V	205/50 R 17 W
Wheel dimensions	6.5 J x 16	6.5 J x 16	7 J x 16	7 J x 17	6.5 J x 16	6.5 J x 16	7 J x 16	7 J x 17
Material	steel	steel	steel	light-alloy	steel	steel	steel	light-alloy

Electrical system	116i	118i	120i	130i	116d	118d	120d	123d
Battery capacity	Ah	80 [70]	80 [70]	80 [70]	70	80	80	80
Alternator output	A	180	180	180	180	180	180	180
	W	2520	2520	2520	2520	2520	2520	2520



All dimensions in millimetres (shown here the BMW 1 Series 5-door). Luggage compartment capacity approx. 330 to 1,150 litres (11.7 to 40.6 cu ft).

¹ The figure quoted includes a 90 per cent tank filling, 68 kg for the driver and 7 kg for luggage. Unladen weight applies to vehicles with standard equipment. Optional equipment may increase this figure.

² The overall weight of the trailer may not exceed the maximum permissible trailer load plus the maximum permissible tow bar download.

³ BMW recommends the use of RON 95 super unleaded petrol. Unleaded RON 91 and higher with a maximum ethanol content of 10% (E10) may also be used. Output and consumption figures apply to RON 98 fuel.

⁴ All engines comply with the EU5 emissions standard. Fuel consumption is determined in accordance with the ECE driving cycle made up of approximately one third urban traffic and two thirds extra-urban driving (based on the distance covered). CO₂ emissions are measured in addition to fuel consumption.

⁵ Electronically limited.

⁶ Track width on 120i and 120d 1480 mm at the front, 1493 at the rear, on 130i and 123d 1474 at the front and 1487 at the rear.

Values in [] apply to vehicles with 6-speed automatic transmission Steptronic.

Sustainability and recycling at the BMW Group.

The BMW Group has been ranked as the industry leader in the Dow Jones Sustainability Index for the fifth consecutive time, making it the most sustainable automotive company worldwide. Sustainability is an integral part of our value chain, encompassing every stage from the development of fuel-saving and alternative vehicle concepts to environmentally-friendly production processes and recycling. Our research and development philosophy, BMW EfficientDynamics, delivers tangible benefits to customers, the climate and the environment. This is reflected in the reduction of CO₂ emissions by nearly 29% between 1995 and 2009 within our European fleet of new cars. Plus we're aiming to reduce the amount of resources such as water and energy consumed by our vehicle production by 30% between 2006 and 2012. Your BMW is also the product of a comprehensive recycling concept. At the end of its long service life, every single vehicle can be easily and economically recycled. Please contact your BMW partner on all matters regarding the return of your end-of-life vehicle. For further information please visit our website.

This models illustrated in this brochure show the specifications of vehicles produced by BMW AG for the German market. In part, they include optional equipment and accessories not fitted as standard. According to the specific requirements of the markets of other European Union member states, alterations in models, standard and optional equipment, as described in this brochure, may occur. For more precise information about country-specific vehicle versions, please contact your local BMW partner. Subject to change in design and equipment.

© BMW AG, Munich/Germany. Not to be reproduced wholly or in part without written permission of BMW AG, Munich.

BMW Service Concept: always up to date. When you buy a BMW, you can look forward to superb service and comprehensive customer care, with over 3,300 BMW Service partners in more than 150 countries ready to assist you at any time. Thanks to the vehicle's integrated on-board diagnostics system, you will always know exactly when the next service is due, and what work will be required. **Condition-Based Service (CBS)** measures the condition of key parts subject to wear, tracks fluid levels and monitors your BMW's time- and mileage-dependent service requirements. Using these measurement data, the Info Display in the cockpit automatically alerts you in advance whenever any

part of the vehicle requires servicing. In the iDrive Control Display, you'll be able to find out exactly which vehicle components will need to be serviced and when. When combined with BMW TeleServices*, the innovative telematics service provided by BMW Service, the data collected by CBS are automatically transmitted to your BMW Service partner. In this way, your service consultant has more time for you, and can provide more comprehensive advice. And naturally, your BMW Service partner will have **Original BMW Parts** available for any work to be done. In short – quality and safety are at the heart of BMW Service.

JOY IS THE FEELING OF BEING LOOKED AFTER BY THE BEST. BMW SERVICE FOR YOUR BMW.



BMW Service Inclusive*. Service costs are another area where your BMW Service partner can offer you an intelligent solution. With BMW Service Inclusive, all the services covered by the Service Package will be provided at no extra cost to you, for the agreed duration or mileage. Find out more at

www.bmw.com/serviceinclusive



BMW TeleServices*. The power of the BMW TeleServices innovation lies in the wireless connection between your BMW and your BMW Service partner. Four weeks before your BMW next requires a service, the system transmits the vehicle's status to your BMW Service partner, enabling the team to make appropriate preparations for any required servicing work. You will then be contacted to discuss the service and make an appointment if desired. In the unlikely event of a breakdown, BMW TeleServices enables you to transmit diagnostics, vehicle and location data directly to BMW breakdown assistance. BMW TeleServices even enables remote correction of many malfunctions – for maximum speed and convenience. www.bmw.com/teleservices



Mobile Service*: A problem? No problem. In the event of a breakdown, BMW Mobile Service is at your disposal round the clock, 365 days a year. Specially trained BMW technicians will do everything necessary to get your BMW back on the road, with telephone or on-site assistance as required. Even costs for towing, a rental car, taxi, hotel accommodation and vehicle return are covered in Europe for five years from initial vehicle registration, as part of the BMW Mobile Care mobility guarantee. In addition, BMW offers attractive schemes for even more comprehensive cover, e.g. for accidents or vehicle theft. More detailed information about BMW Service is available from your BMW Service partner or online at www.bmw.com



BMW Financial Services. This beautiful car needs a package developed to suit the needs of customers who look for convenience, keeping business and private life in balance and expect to get a leasing and insurance combination that leads to a hassle-free driving experience. A solution that perfectly fits you and your budget. In this regard we offer you more than just attractive conditions: a combination* of leasing, payment protection insurance and GAP insurance complemented by BMW Motor Insurance with an exclusive 10% discount** in the premium if you order Lane Change Warning, Head-Up Display, Lane Departure Warning or ACC Stop & Go. Find out more at www.bmw.com or even better, experience it yourself! Your local BMW partner will be pleased to make you an individual offer for the vehicle of your choice.

* May not be available in all countries. Please consult your BMW partner.

** Please get in contact with your local BMW Financial Services subsidiary to find out which specific offers are applicable to your country.



JOY COMES IN MANY FORMS.



BMW Magazine: information and entertainment. The BMW Magazine is a competent source for the latest, comprehensive news from the world of BMW. You receive two copies per year free of charge when you purchase a new BMW.



BMW Welt: joy has a home. When you see your very own BMW for the very first time, touch it, sit inside it, start its engine – the actual handover of a new vehicle is one of the proudest moments for every car driver. And now this moment can last for one whole, unforgettable day: at BMW Welt, the brand experience and delivery centre in Munich. Marvel at the historic BMWs in the Museum, learn about our engineers' latest innovations in the Technology and Design Studio, and take a tour of our plant to experience with your own eyes the cutting-edge technology and precision that go into creating a BMW. To find out more and get a first impression of the BMW Welt, visit www.bmw-welt.com. Your local BMW partner can also provide you with more information. We look forward to seeing you.



BMW Driver Training: "Learn how to enhance your driving pleasure."

Driving a BMW should be fun. And like any other piece of sports equipment, the better you are able to control it, the more challenges you can take on. BMW Driver Training teaches you – on roads, test tracks and even race tracks – how far you can push your BMW, while still remaining perfectly safe. Topics range from safety, winter and energy-saving training to courses on one of the toughest race tracks in the world, the Nürburgring. More information is available at

www.bmw-driver-training.com

More about BMW

www.bmw.com



Sheer
Driving Pleasure

This code takes you to an internet address containing further information. It can be recorded and decoded with a mobile telephone camera, if you have Sernacode Reader installed. Alternatively, you can reach the page at www.bmw.mobi

